



FORBES GROUP

# PRODUCT CATALOGUE

# FORBES GROUP

## CONTENTS

FURNITURE COLLECTION	3
Alu-Lite Folding Tables	4-7
Alu-Lite Folding Tables	8-9
Folding Seminar Tables	10-12
Flip-Top Tables	13-14
Fold Rite Folding Tables	15-16
Cocktail Tables	17
Bufet Cube	16
Buffet Rite Table Top	19
Mobile Nesting Buffet Tables	20-22
Linen-Less Buffet Tables	23
Stacking Conference Chairs	24
Stacking Chairs	25-27
Meeting Room Chairs	28
Acrylic Presentation Lecterns	29
Seminar Lecterns	30
Audio Visual Lecterns	31
Room Dividing Screens	32
Portable Stage	33
Portable Dance Floor	34
FABRIC COLLECTION	35
Fiited Drop Covers	36
Conference Cloths	37
Contemporary Table Covers	38
Stretch Table Covers	39
Stretch Cocktail Table Covers	40
Simple-Fit Table Skirting	41
Restaurant Table Skirting	41
Table Skirting with Clips	42
Luxury Weave Tablecloths & Napkins	43
Serenity Tablecloths & Napkins	43
Table Protectors	44
Stage Skirting	45
Custom Fabric Chair Covers	46
Standard Chair Covers	47
Stretch Chair Covers	48
Conference Blotters	49
Flip Chart Covers	50
EQUIPMENT COLLECTION	51
Birdcage Hotel Luggage Carts	52-53
Deluxe Hotel Luggage Trolleys	54
Economy Hotel Luggage Trolleys	55
Bellman's Equipment	56
Room Service Tables & Trolleys	57
Room Service Hot Boxes	58
Luggage Racks	59
Housekeeping Carts	60
Laundry Carts	61
Linen Carts & Garment Racks	62
Mobile Bars & Back Bars	63-64
Podiums & Host Stations	65

# FURNITURE COLLECTION





## LIGHTWEIGHT FOLDING TABLES ALU-LITE

Lightweight folding tables that are ideal for buffet or banquets, reception or meetings in classroom, cabaret or U-shape set ups.

Left: Rectangular Folding Table with Standard Legs



Round Folding Table



Half Round Folding Table

### Key features:

- Waterproof and durable laminate surface
- Aluminium frame is lightweight and recyclable
- Resistant to corrosion, ideal for outdoor use
- Self locking folding mechanism
- Alu-Lite tables conform to the EU guidelines for lifting weights
- Nylon flush fit corners are fitted as standard on rectangular tables

### Optional extras:

- Flock coating to reduce noise in busy venues
- Storage trolley

### Quality:

The Alu-Lite range, with its patented engineering, is produced to a high-end specification, including 100% aluminium frames and 2.5mm solid laminate tops, which are heat resistant and waterproof, for strength and durability.

### Flush fit corners:

Flush fit corners are standard on all rectangular Alu-Lite tables. The new nylon corners adds strength and improves corner impact resistance. It also incorporates a stacking buffer that allows tables to be stacked and stored with ease.



Oval Folding Table



Rectangular Folding Table with T-Bar Legs





## LIGHTWEIGHT FOLDING TABLES ALU-LITE

Lightweight folding tables that are ideal for buffet or banquets, reception or meetings in classroom, cabaret or U-shape set ups.

Left: Round Folding Table Storage Trolley

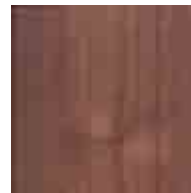


Storage Trolley



Storage Trolley

### Table Top Finishes:



Walnut



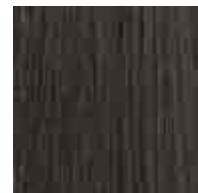
Beech



Oak



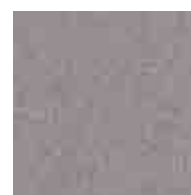
Ash



Wenge



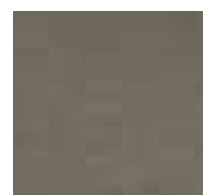
Cherry



Sheffield



Anthracite



Flocked

### Frame Powder Coating:



Silver Sparkle



Black



Anthracite



Matte Brown



#### Fast set-up/breakdown:

Both set-up and breakdown of rooms is quicker than with conventional banquet tables, with attendant implications for efficiency and cost- savings.



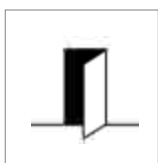
#### 97% recyclable:

Alu-Lite tables are manufactured from aluminium (97%) and laminate resin (3%). All of the aluminium can be recovered and recycled.



#### Great for outdoor use:

Alu-Lite tables can be used and stored outside. Aluminium is inherently highly resistant to corrosion, making it particularly advantageous for use near coastal resorts.



#### Less Damage to Property:

The lower weight of these tables means that they cannot be used by staff to bang open doors, and they are less likely to cause damage to walls and doorframes.

## Rectangular Table - Standard Leg



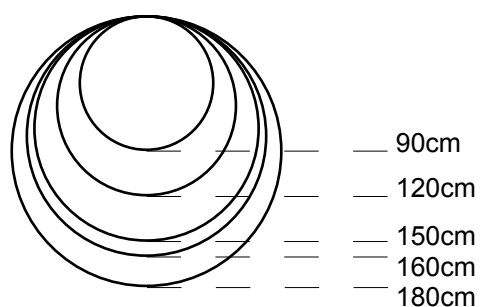
AFT8075	80 cm	75 cm	7.8 kg
AFT1245	120 cm	45 cm	7.2 kg
AFT1260	120 cm	60 cm	8 kg
AFT1275	120 cm	75 cm	8.8 kg
AFT1545	150 cm	45 cm	8.5 kg
AFT1560	150 cm	60 cm	9.2 kg
AFT1575	150 cm	75 cm	9.8kg
AFT1845	180 cm	45 cm	9.7kg
AFT1860	180 cm	60 cm	10.2kg
AFT1875	180 cm	75 cm	10.9kg
AFT2045	200 cm	45 cm	10.7kg
AFT2245	220 cm	45 cm	11.5kg
AFT2475	240 cm	75 cm	14.5kg

	45cm	60cm	75cm
80cm			
120cm			
150cm			
180cm			
200cm			
220cm			
240cm			

## Round Table - Standard Leg



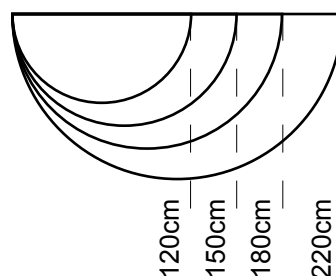
AFT90D	90 cm	3 ft	9.8 kg
AFT12D	120 cm	4 ft	12 kg
AFT15D	150 cm	5 ft	14.5 kg
AFT16D	160 cm	5 ft	16.5 kg
AFT18D	180 cm	6 ft	20 kg



## Half Round Table - Standard Leg



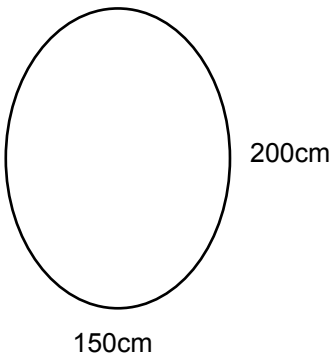
AFT12SC	120 cm	4 ft	9 kg
AFT15SC	150 cm	5 ft	10 kg
AFT18SC	180 cm	6 ft	14 kg
AFT22SC	220 cm	7 ft	16 kg



**Standard height (for all Alu-Lite) = 73.5 cm**

**Special sizes available on request**

Oval Table - Standard Leg



AFTT2015      200 cm      150 cm      19.6 kg

Rectangular Table - T-Bar T-Leg



AFTT8075	80 cm	75 cm	7.8 kg
AFTT1260	120 cm	60 cm	8 kg
AFTT1275	120 cm	75 cm	8.8 kg
AFTT1545	150 cm	45 cm	8.5 kg
AFTT1560	150 cm	60 cm	9.2 kg
AFTT1575	150 cm	75 cm	9.8kg
AFTT1845	180 cm	45 cm	9.7kg
AFTT1860	180 cm	60 cm	10.2kg
AFTT1875	180 cm	75 cm	10.9kg
AFTT2045	200 cm	45 cm	10.7kg
AFTT2245	220 cm	45 cm	11.5kg
AFTT2475	240 cm	75 cm	14.5kg

	45cm	60cm	75cm
80cm			
120cm			
150cm			
180cm			
200cm			
220cm			
240cm			

Standard height (for all  
Alu-Lite) = 73.5 cm

Special sizes available  
on request



## CONFERENCE ROOM FOLDING TABLES - CONFERENCE-RITE

Folding conference tables with a clean modern design. Ideal for convention centres, conference rooms and meeting rooms.



Folding conference table - round leg with modesty panel



Folding conference table - square leg

### Key features:

- Wipe clean surfaces
- T-bar leg shape provides more legroom for delegates
- Choice between round and square legs (square as standard)
- Self locking folding mechanism
- Frame is recyclable and resistant to corrosion

### Optional extras:

- Modesty panel
- Seminar frame
- Seminar flip-top table with wheels/castors



Modesty panel - square leg shown



Folded table



Modesty panels are slotted into a simple keyhole



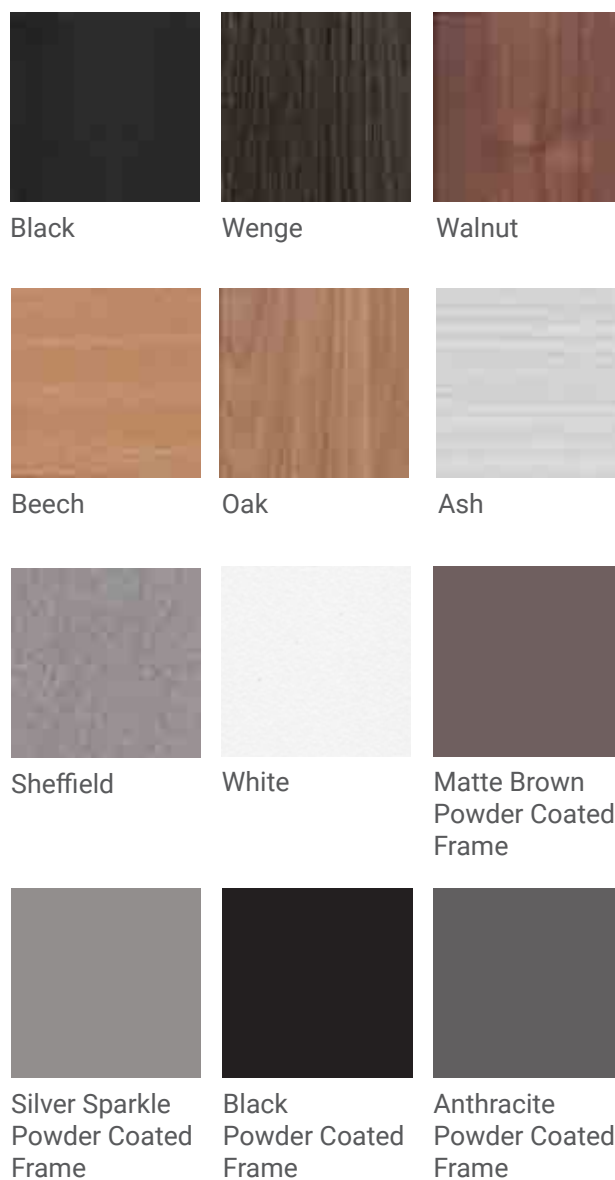
Legs fold flat against the table top





## CONFERENCE ROOM FOLDING TABLES - CONFERENCE-RITE

### Finishes:



Black

Wenge

Walnut

Beech

Oak

Ash

Sheffield

White

Matte Brown  
Powder Coated  
Frame

Silver Sparkle  
Powder Coated  
Frame

Black  
Powder Coated  
Frame

Anthracite  
Powder Coated  
Frame

CRT1545	150 cm	45 cm
CRT1560	150 cm	60 cm
CRT1575	150 cm	75 cm

CRT1845	180 cm	45 cm
CRT1860	180 cm	60 cm
CRT1875	180 cm	75 cm

**Standard height  
(for all Conference-Rite)  
= 73.5 cm**

**Special sizes and custom  
finishes available on  
request**

**NOTE: Frames are supplied in  
Silver Sparkle finish with square  
legs unless otherwise specified.**

75cm  
60cm  
45cm

150cm		
180cm		



## FOLDING SEMINAR TABLES

Seminar and conference room tables with folding legs are practical and allow for flexibility in room set up. They're ideal for meeting rooms, conferences and to use in boardrooms.

### Key Features

- Folding conference table, quick to set up and easy to store
- Self locking leg folding mechanism
- 38mm thick table top in stylish wood grain colour
- 100% aluminium frame is recyclable
- Adjustable glides on feet for stability
- Stacking buffers prevent surface damage

### Optional extras:

- A table linking system is available which allows tables to be linked together
- Modesty panels are optional
- Table trolleys and table castors are available to use for storage and transport
- Flip top version also available



Rectangular Seminar Table with folding legs in Walnut



Oval Table with rounded edges in Beech



Oval Table with flat edges in Oak



Conference Tables with modesty panels - Modesty panels slide into place on the tables



## FOLDING SEMINAR TABLES

Modular Seminar Tables (shown left)

Rectangular and half round tables are linked together with cam locks.

Please specify which tables will link. Additional cam locks can be purchased.

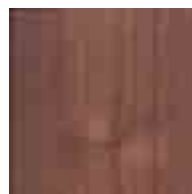


Half Round Seminar Table in Walnut



Trapeze Seminar Table (flip top version shown)

Finishes:



Walnut



Beech



Oak



Triangular section



72" segment



Ash



Wenge



Black Powder Coated Frame



Triangular section shown in place



Anthracite Powder Coated Frame



Matte Browne Powder Coated Frame



Silver Sparkle Powder Coated Frame



## FOLDING SEMINAR TABLE SIZES

### Dimensions:

#### Rectangular Tables

120 x 60 cm (16.5kg)  
120 x 75 cm (19.5kg)  
120 x 80 cm (19.5kg)

160 x 45 cm (17kg)  
160 x 60 cm (22kg)  
160 x 75 cm (24kg)  
160 x 80 cm (24kg)

180 x 45 cm (18kg)  
180 x 60 cm (23kg)  
180 x 75 cm (25kg)  
180 x 80 cm (25kg)

200 x 45 cm (18.4kg)  
200 x 60 cm (18.8kg)  
200 x 75 cm (19.2kg)  
200 x 80 cm (19.4kg)

220 x 45 cm (18.7kg)  
220 x 60 cm (19kg)  
220 x 75 cm (19.5kg)  
220 x 80 cm (19.8kg)

240 x 45 cm (19.1kg)  
240 x 60 cm (19.5kg)  
240 x 75 cm (19.9kg)  
240 x 80 cm (20.1kg)

#### Oval Tables (Flat & Rounded shapes)

220 x 110 cm

#### Half Round Tables

120 cm ø (16kg)  
150 cm ø (17.2kg)  
180 cm ø (18.7kg)

#### 72" Segment (Quarter Rounds)

45 cm 1/4ø (2kg)  
60 cm 1/4ø (2.5kg)  
75 cm 1/4ø (3kg)  
80 cm 1/4ø (3.6kg)

#### Trapeze Table

160 x 69.2 cm (23kg)

#### Triangular Section (Straight Edge)

45 cm wide (1kg)  
60 cm wide (2.3kg)  
75 cm wide (2.8kg)  
80 cm wide (3.4kg)



Transport Trolley



Flip-top version with wheels



Detail photo showing leg folding mechanism, stacking buffers, and cam locks

**Special sizes available on request**

**Standard Height = 73.5 cm**



## FLIP-TOP TABLES

Flip-Top meeting room tables that can be nested for storage, saving space. Ideal for conferences and seminars in classroom style, U shape or cabaret room settings.



Flip-Top Table (Steel Frame)



Flip-Top Tables - Trestle, Round, Half Round & Trapeze



Flip-Top Table (Aluminium Frame)



Flip-Top Table - Easy Storage



Flip-Top Table - Half Round (Aluminium Frame)



Flip-Top Table - Trapeze (Aluminium Frame)

### Key Features

- Quick folding mechanism
- Save space on storage
- Reduces time required for room set up
- Table top in 18, 25 and 38mm thicknesses

### Optional extras:

- Choice of frame material (steel or lightweight aluminium)
- Power plug unit and cable management system
- Castors for easy manoeuvring (included with aluminium frame)



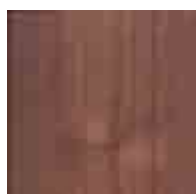
Flip-Top Tables are quickly set up with a simple hooking mechanism



## FLIP-TOP TABLES

Flip-Top Tables can be linked to form oval, U-shape or hexagonal room setups.

### Finishes:



Walnut



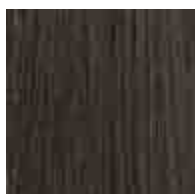
Beech



Oak



Ash



Wenge



Dura Sheffield



Matte Browne  
Powder Coated  
Frame



Silver Sparkle  
Powder Coated  
Frame



Anthracite  
Powder Coated  
Frame



Black Powder  
Coated Frame

### Dimensions:

#### Rectangular

135 x 67.5 cm  
150 x 75 cm  
160 x 80 cm  
180 x 75 cm

#### Round

120 cm ø

#### Trapeze

135 x 58.5 cm  
150 x 65 cm  
160 x 69.3 cm

Special sizes available on request

Height = 73.5 cm

Steel frame is available in Chrome or Powder Coated, Aluminium Frame is Powder Coated



Tables are available with power sockets and USB ports.  
Cable management is also available.



## FOLDING TABLES - FOLD-RITE

Strong stackable steel frame tables for banqueting



Round Folding Table



Rectangular Trestle Table



Modular Table  
(shows Half Round)

### Key features:

- High density MDF or Finnish Birch top
- Steel frames with powder coating finish
- Self locking folding mechanism

### Optional extras:

- 2.5mm PVC protective edging in plywood effect
- Table linking system
- Transport trolley

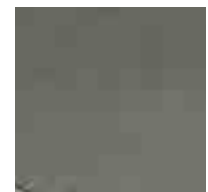
### Finishes:



High Den-  
sity Chipboard  
(Sealed Wood)



Finnish Birch  
(Sealed Wood)



Textured Nylon  
(Flocking)



Matt Brown  
Powder Coating



Silver Sparkle  
Powder Coating



Black Powder  
Coating

## Rectangular Table - Finnish Birch



PR45	122 x 45 cm	18kg	PR47	183 x 45 cm	20kg
PR60	122 x 60 cm	17kg	PR62	183 x 60 cm	19kg
PR76	122 x 76 cm	18kg	PR78	183 x 76 cm	20kg
PR46	152 x 45 cm	19kg	PR63	210 x 60 cm	20kg
PR61	152 x 60 cm	18kg	PR79	210 x 76 cm	22kg
PR77	152 x 76 cm	19kg	PR64	240 x 60 cm	21kg
			PR80	240 x 76 cm	24kg

Special sizes available on request

Standard Heights = 72, 73.5, 76 cm

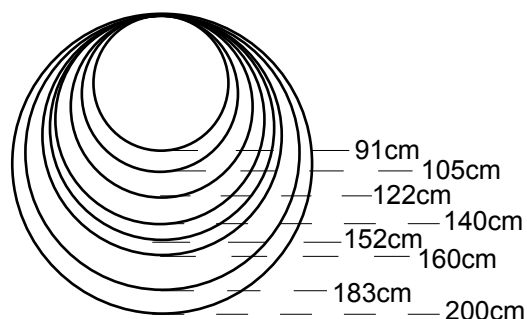
45cm  
60cm  
76cm

122cm		
152cm		
183cm		
210cm		
240cm		

## Round Table - HDC



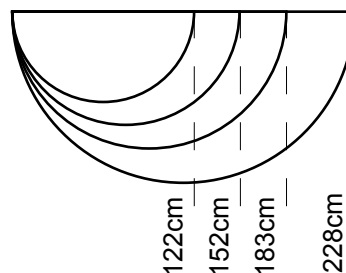
PC10	91 cm Ø	16.2kg
PC11	105 cm Ø	19kg
PC12	122 cm Ø	24.3kg
PC13	140 cm Ø	
PC14	152 cm Ø	35.5kg
PC14A	160 cm Ø	40kg
PC15	183 cm Ø	45kg
PC16	200 cm Ø	



## Half Round Table - HDC



PH29	122 cm Ø	
PH30	152 cm Ø	18.6kg
PH31	183 cm Ø	24.3kg
PH32	228 cm Ø	31.5kg





## COCKTAIL TABLES, POSEUR TABLES OR BISTRO TABLES

Ideal for casual dining, drinks  
receptions, buffet or banquets, par-  
ties and coffee breakouts



Calvados Round Cocktail  
Table with Compact Top



Manhattan Round Poseur  
Tables showing Nesting Base



Manhattan Transport Trolley



Grenadine Round Poseur  
Table with Stainless Steel Top  
and Aluminium Edge



Calvados Square Bistro Table  
with Compact Top



Grenadine Square Bistro  
Table with Stainless Steel Top  
and Aluminium Edge

### Key features:

- Compact, Laminate or Stainless Steel top
- With or without Aluminium edging
- MDF edging available for Laminate only

### Optional extras:

- Top protector (acrylic)
- Transport trolley
- Stretch table cover

### Dimensions:

Calvados	60 cm ø	72.5 cm or 118 cm
Calvados	70 cm ø	72.5 cm or 118 cm
Calvados	60 cm x 60cm	72.5 cm or 118 cm
Calvados	70 cm x 70 cm	72.5 cm or 118 cm

Calvados top: Fixed or Folding  
Calvados base: Matt Black or Grey

Grenadine	60 cm ø	74 cm or 112 cm
Grenadine	70 cm ø	74 cm or 112 cm
Grenadine	60 cm x 60cm	74 cm or 112 cm
Grenadine	70 cm x 70 cm	74 cm or 112 cm

Grenadine top: Fixed or Folding  
Grenadine base: Gloss or Matt finish

Manhattan	60 cm ø	73 cm or 112 cm
Manhattan	70 cm ø	73 cm or 112 cm
Manhattan	60 cm x 60cm	73 cm or 112 cm
Manhattan	70 cm x 70 cm	73 cm or 112 cm

Manhattan top: Folding  
Manhattan base: Gloss, Matt or Champagne finish

Laminate is available in over 60 colours.



## BUFFET CUBE

Portable mobile bar or buffet table that is quick to set up and break down, with a hard wearing wipe clean surface.



Folds to under 10 cm for storage



Assembles in seconds



Buffet Cube

### Key features:

- Strong aluminium frame
- Wipe clean 2.5mm laminate top
- Suitable for serving buffet or as a mobile bar
- Easily portable (under 20kg)
- Folds flat (only 80mm deep when folded)

### Optional extras:

- Stretch fabric cover

### Dimensions:

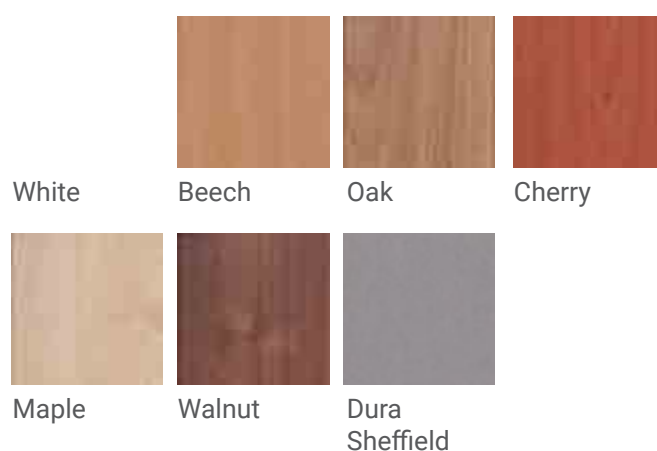
1800 x 1000 x 900 mm  
2000 x 1000 x 900 mm

Other sizes available on request.



Buffet Cube with stretch cover

### Finishes:



Frame is available in natural finish or powder coated in black, silver or gold.



## BUFFET RITE TABLE TOP

Convert your existing trestle table into a buffet or drink station in seconds with a Buffet-Rite top - a heat resistant and wipe clean water-proof laminate surface.



Black Coated Aluminium Frame with Black Corners



Plain Aluminium Frame with Black Corners

### Key features:

- Easy fit wipe clean laminate top
- Saves on laundry
- Made to measure
- Suitable for indoor and outdoor use

### Optional extras:

- Trestle table
- Silcra stretch table cover

### Laminate Top Finishes:



Dura Sheffield



Greek Marble



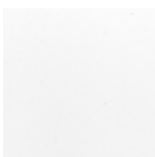
Black



Speckled Grey



Sheffield Gloss



White

### Dimensions:

122 x 76 cm	(3.9kg)
152 x 76 cm	(4.2kg)
183 x 76 cm	(4.7kg)
210 x 76 cm	(4.9kg)
200 x 100 cm	( 5.5kg)

Special sizes available on request



## MOBILE NESTING BUFFET TABLES

Serve in style on the nesting buffet table collection. Six individually designed series, one of which is sure to match your venue. Buffet tables are different heights, adding aesthetic value and are attractive enough that there is no need to move them to back-of-house when not in use, or use table linen.



Brooklyn Nesting Buffet  
Tables



Claremont 3 Nesting Buffet  
Tables



Claremont 4 Nesting Buffet  
Tables



Fiji Nesting Buffet Tables



Foss Nesting Buffet Tables



Rustica Nesting Buffet Tables

### Key features:

- Six uniquely designed series
- Nesting reduces storage space required
- Inset countertops to protect corners
- Four swivel castors and two brakes

### Optional extras:

- 26 standard laminate and 6 upgrade finishes\*
- Stainless steel or solid wood leg frames\*

\* Dependent on range chosen

### Dimensions:

Brooklyn Large table: 183 x 77 x 92 cm  
Brooklyn Medium table: 168 x 77 x 84 cm  
Brooklyn Small table: 153 x 77 x 77 cm

Claremont 3 Large table: 183 x 77 x 103 cm  
Claremont 3 Medium table: 168 x 77 x 93 cm  
Claremont 3 Small table: 153 x 77 x 83 cm

Claremont 4 Large table: 183 x 77 x 103 cm  
Claremont 4 Medium table: 168 x 77 x 93 cm  
Claremont 4 Small tables: 77 x 77 x 112 cm

Fiji Large table: 183 x 77 x 92 cm  
Fiji Medium table: 168 x 77 x 84 cm  
Fiji Small table: 153 x 77 x 77 cm

Foss Large table: 183 x 77 x 98 cm  
Foss Small tables: 82 x 69 x 78 cm

Rustica Large table: 183 x 77 x 91 cm  
Rustica Medium table: 163 x 69 x 84 cm  
Rustica Small table: 143 x 61 x 76 cm



Brooklyn



Brooklyn - nested

#### Finishes:

##### Elite MODEL #7427

Tops – 3/8" Tempered Glass

Frames – Polished Stainless Steel

##### Executive MODEL #7424

Tops – 3/8" Tempered Glass

Frames – Powder Epoxy Finish

##### Essentials MODEL #7421

Tops – High Pressure Laminate (26 standard colours/6 upgrade colours)

Frames – Powder Epoxy Finish



Claremont 3 - nested



#### Acacia Driftwood

##### Colours:

Acacia Driftwood,  
Acacia Weathered,  
Acacia Natural

#### Finishes:

##### Elite MODEL #7408

Tops – Acacia Driftwood

Frames – Brushed Stainless Steel

##### Executive MODEL #7405

Tops – High Pressure Laminate (26 standard colours/6 upgrade colours) Frames – Brushed Stainless Steel

##### Essentials MODEL #7402

Tops – High Pressure Laminate (26 standard colours/6 upgrade colours)

Frames – Powder Epoxy Finish



Claremont 4 - nested



#### Acacia Driftwood

##### Colours:

Acacia Driftwood,  
Acacia Weathered,  
Acacia Natural

#### Finishes:

##### Elite MODEL #7407

Tops – Acacia Driftwood

Frames – Brushed Stainless Steel

##### Executive MODEL #7404

Tops – High Pressure Laminate (26 standard colours/6 upgrade colours)

Frames – Brushed Stainless Steel

##### Essentials MODEL #7401

Tops – High Pressure Laminate (26 standard colours/6 upgrade colours) Frames – Powder Epoxy Finish

Frames – Powder Epoxy Finish

#### Standard Laminate Colours:

Ice Fishin, Cavalcade South, Crisscross, Wedding Cake, Looks Likatre, Negotiating in Geneva, Cookies and Cream, Macadamia Nut, Chocolate Malt, Maple, Light Oak, Medium Oak, Cherry, Smoky Walnut, Seems Likatre, Royal Burgundy, Walnut, Mahogany, Thunderstorm, Greige, Ingot Gray, Slate, Lunar Legno, First in Main, Suede, Black

#### Upgrade Laminate Colours:

Calcutta Marble, Hedgerow, Upland Stone, Black Woodgrain, Polar Cap, Pyrenees Marble





Fiji



Fiji - nested

#### Finishes:

##### Elite MODEL #7437

Tops – Wood Veneer, 13 colours

Frames – Black Painted Wood

##### Executive MODEL #7434

Tops – High Pressure Laminate (26 standard colours/6 upgrade colours)

Frames – Black Painted Wood

##### Essentials MODEL #7431

Tops – High Pressure Laminate (26 standard colours/6 upgrade colours)

Frames – Black Powder Epoxy Steel

Frames – Powder Epoxy Finish



Foss



Foss - nested

#### Finishes:

##### Elite MODEL #7417

Tops – Wood Veneer, 13 colours

Frames – Brushed Stainless Steel

##### Executive MODEL #7414

Tops – High Pressure Laminate (26 standard colours/6 upgrade colours)

Frames – Brushed Stainless Steel

##### Essentials MODEL #7411

Tops – High Pressure Laminate (26 standard colours/6 upgrade colours) Frames – Powder Epoxy Finish



Rustica



Rustica - nested

#### Finishes:

##### Elite MODEL #7447

Tops – Rustic Vintage Wood

Frames – Black Pipe

##### Executive MODEL #7444

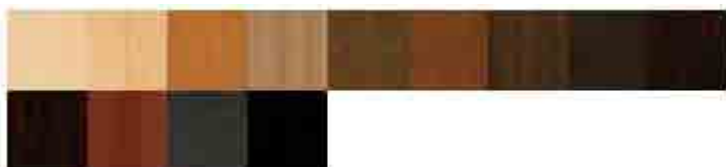
Tops – Galvanized Steel

Frames – Black Pipe

##### Essentials MODEL #7441

Tops – Mahogany Stained Wood Veneer

Frames – Black Pipe



#### Wood Veneer Colours:

Satin Champagne, Satin Maple, Satin Light Oak, Satin Golden Mahogany, Satin Natural Cherry, Satin Dark Oak, Satin Medium Oak, Satin Brown Mahogany, Satin Brown Cherry, Satin Red Cherry, Satin Red Mahogany, Satin Pecan, Satin Stormy Birch, Black



## LINEN-LESS BUFFET TABLES

Linenless catering or banquet tables that are easy to set up or break down and save on laundry costs.



7027L-42 Square Buffet Table with Laminate top



7033T-42 Round Buffet Table with Trend top

### Key Features:

- Linenless
- Easy to set up / break down - no tools required
- Steel frame & stainless steel folding frame
- Multiple finishes and heights

### Optional extras:

- Recycled environmentally friendly finish
- LED light tops
- Storage trolley

### Finishes:

Laminate in 32 colours

Trend in 25 colours

### Dimensions:

7027L-42 76 x 76 x 92 cm  
Available in 61, 76, 92, 107, 122cm heights

7033T-42 76 x 76 x 92 cm

7037L-36 92 x 92 x 76 cm  
Available in 61, 76, 92, 107, 122cm heights

7043ES-36 92 x 183 x 92 cm  
Available in 107cm height

Wide range of other sizes also available.

Shown left:  
7043ES Rectangular Buffet Table  
with Essentials Black Laminate top



7037W-36 Square Buffet Table with Hardwood top



7050 Storage Trolley





# STACKING CONFERENCE CHAIRS



Cameo Chair - upholstered back and seat (no arms)



Cameo Chair - upholstered back and seat with arm and writing tablet

## Key Features

Cameo (with or without arms & writing tablet)

- Stacks up to 10 high
- Alu RAL 9006 frame or Chrome frame
- Upholstered seat & back \*
- Upholstered seat & wood back \*
- Wood seat & wood back

\* Upholstery Group 1 or Group 2 fabrics (60 colours), faux leather (optional extra) or customer's own fabric (on request)

Optional extras:

- Arms
- Writing Tablet
- Trolley available
- Floor Guide Link System (fixed/interchangeable numbers) available

Dimensions:

Cameo	49	x 56	x 85 cm	x kg
Seat	45			
Arms	70			



Double and Triple Chair options are also available



## STACKING CHAIRS

Suitable for banquet halls, conferences and meeting rooms, community & church halls, schools & universities.



EC01 Stacking Chair  
Banqueting / Conference /  
Meeting Room



EC02 Stacking Chair  
Banqueting / Conference /  
Meeting Room



EC03 Stacking Chair  
Banqueting / Conference /  
Meeting Room



EC04 Stacking Chair  
Banqueting / Conference /  
Meeting Room



EC06 Stacking Chair  
Banqueting / Conference /  
Meeting Room



EC07 Stacking Chair  
Banqueting / Conference /  
Meeting Room



EC08 Stacking Chair  
Banqueting / Conference /  
Meeting Room



EC09 Stacking Chair  
Banqueting / Conference /  
Meeting Room

**Continued on the next page.**

STACKING CHAIR RANGE



EC10 Stacking Chair  
Banqueting / Conference /  
Meeting Room



EC11 Stacking Chair  
Banqueting / Conference /  
Meeting Room



EC12 Stacking Chair  
Banqueting / Conference /  
Meeting Room



EC13 Stacking Chair  
Banqueting / Conference /  
Meeting Room



EC14 Stacking Chair  
Banqueting / Conference /  
Meeting Room



EC15 Stacking Chair  
Banqueting / Conference /  
Meeting Room



EC16 Stacking Chair  
Banqueting / Conference /  
Meeting Room



EC22 Stacking Chair  
Banqueting / Conference /  
Meeting Room



EC24 Stacking Chair  
Banqueting / Conference /  
Meeting Room



EC28 Stacking Chair  
Banqueting / Conference /  
Meeting Room



EC35 Stacking Chair  
Banqueting / Conference /  
Meeting Room



EC36 Stacking Chair  
Banqueting / Conference /  
Meeting Room

## STACKING CHAIR RANGE

Dimensions:				Stack	Weight
EC01	91	x 44	x 63.5 cm	8	6.9kg
EC02	90.5	x 44	x 63.5 cm	8	6.9kg
EC03	93	x 45	x 63 cm	10	5.7kg
EC04	89	x 45	x 67 cm	10	5.2kg
EC06	92	x 45	x 63 cm	10	5.6kg
EC07	93	x 45	x 59 cm	10	5.4kg
EC08	89	x 45	x 57 cm	10	5.4kg
EC09	86	x 42	x 58 cm	10	4.8kg
EC10	88	x 45	x 57 cm	10	5.2kg
EC11	86	x 42	x 58 cm	10	4.9kg
EC12	88	x 42	x 58 cm	10	4.6kg
EC13	94	x 45	x 59 cm	10	5.4kg
EC14	91	x 44	x 63.5 cm	8	6.9kg
EC15	93	x 45	x 63 cm	10	5.7kg
EC16	100	x 55.5	x 63 cm	5	9.5kg
EC24	88	x 42	x 58 cm	10	4.6kg
EC22	90	x 42	x 58 cm	10	4.9kg
EC28	94	x 45	x 62 cm	10	6.6kg
EC35	96	x 47	x 60 cm	6	8.0kg
EC36	96	x 47	x 60 cm	6	8.0kg

## STACKING CHAIRS

Comfortable conference hall, banqueting and meeting room chairs that are lightweight and stack up to 10 high.

### Key Features

- Stacking chairs designed for contract use
- Stack up to 10 chairs high for ease of storage
- Ergonomically contoured seat to guarantee extra comfort
- Backrest with lumbar support provides comfort for long hours, standard on chair models EC01/EC02/EC03/EC06
- Upholstered in flame retardant contract fabrics
- Aluminium frame is suitable for recycling
- Steel frame for EC35 & EC36.

### Suitable for:

- Banquet halls
- Conferences
- Meetings
- Schools & university classrooms

### Optional extras:

- Tailored fabric chair covers are available
- Arms / Upholstered arms
- Chair linking
- Writing tablets
- Chair trolleys

### Finishes:

Upholstery is available from over 10 fabric ranges in 300 colours including Grey, Blue, Green, Brown, Gold, Yellow, White, Red and Black. Knitted mesh on EC35 & EC36.

Frame colours: Aluminium, Silver, Gold, Brown, Black.



## MEETING ROOM CHAIRS



Mirage Chair with Cantilever  
Legs



Mirage Chair with Five Star  
Swivel Base

### Key Features

#### Mirage Cantilever:

- Chrome plated cantilever leg
- Valencia faux leather or Full split leather
- Soft leather upholstered armrests

#### Mirage Swivel:

- Chrome plated 5 star swivel castor base
- Valencia faux leather or Full split leather
- Soft leather upholstered armrests
- Castors suitable for carpeted floors
- Equipped with gas lift, height regulation and the relax mobility system
- Self-assembly is required

### Dimensions:

Cantilever	96	x 56.5	x 60 cm
Swivel	104-113	x 68.5	x 45-54 cm



## PORTABLE ACRYLIC PRESENTATION LECTERNS



Box  
Acrylic Lectern



Box Junior  
Acrylic Lectern



Carving  
Acrylic Lectern



Freestyle - Acrylic & Oak or  
Walnut Veneer



Parallel  
Acrylic Lectern



Plane  
Acrylic Lectern



Slide  
Acrylic Lectern



V  
Acrylic Lectern

### Key features:

- Lightweight & portable
- Lifetime guarantee
- 12mm cast acrylic (apart from Slide which is 10mm)

### Optional extras:

- Light pack
- Personalisation with a logo (not all models)

### Freestyle / V only:

- Clear, white, frosted or black acrylic options

### Dimensions:

Box	60	x 43	x 117.5 cm
Box Junior	50	x 40	x 115 cm
Carving	50	x 40	x 118 cm
Freestyle	66	x 43	x 118 cm
Parallel	60	x 40	x 122 cm
Plane	60	x 42	x 117 cm
Slide	50	x 40	x 118 cm
V	60	x 43	x 118 cm



## SEMINAR LECTERNS

Top quality UK made seminar lecterns finished in wood veneer



Corporate  
Seminar Lectern



Town Hall  
Seminar Lectern



President  
Seminar Lectern



Civic  
Seminar Lectern



Townsend  
Seminar Lectern

### Key features:

- Cable management

### Optional extras:

- Light pack
- Logo on acrylic plate
- Cover

### Dimensions:

Corporate	60	x 40	x 115 cm
Town Hall	60	x 45	x 110 cm
President	66	x 53	x 117 cm
Civic	66	x 42	x 118 cm
Townsend	68	x 40	x 119 cm

### Finishes:



Ash



Beech



Cherry



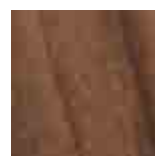
Sapele



Maple



Oak



Walnut



## AUDIO VISUAL LECTERNS

Top quality UK made audio visual lecterns finished in wood veneer or melamine



Uni 3 AV  
Lectern



Uni 5 AV  
Lectern



Uni 8 AV  
Lectern



Uni 10 AV  
Lectern

### Key features:

- Wood Veneer or Melamine
- Cable management
- Castors
- Adjustable shelving

### Optional extras:

- Light pack
- Monitor fitting
- Rack strips and spacers
- Logo on acrylic plate
- Cover

### Dimensions:

Uni 3 AV	60	x 50	x 120 cm
Uni 5 AV	60	x 58.5	x 125 cm
Uni 8 AV	52.5	x 53	x 117 cm
Uni 10 AV	65	x 55	x 124 cm

### Finishes:



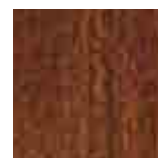
Ash



Beech



Cherry



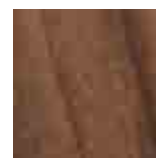
Sapele



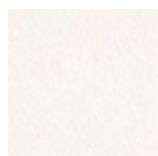
Maple



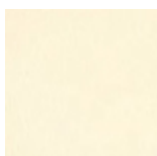
Oak



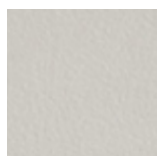
Walnut



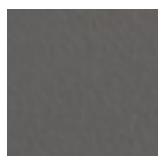
White  
Melamine



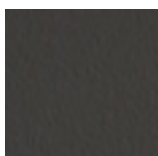
Vanilla  
Melamine



Light Grey  
Melamine



Dark Grey  
Melamine



Black  
Melamine



## ROOM DIVIDING SCREENS

Single or linked folding room screens in a variety of colours.

Left: Triple Room Dividing Screen  
- Dark Grey



Triple Room Dividing Screen -  
Light Grey



Triple Room Dividing Screen  
- Black

### Key Features:

- Lightweight and portable
- Supplied as a single room screen or a triple folding screen
- Provided with stabiliser feet
- Supplied with flexible linking (black)
- Upholstered in fabrics in a variety of colours

### Optional:

- Castors

### Finishes:

Rust Red, Bright Red, Green, Dark Blue, Royal Blue, Teal Blue, Aqua Blue, Lavender, Light Blue, Light Grey, Mid Grey, Dark Grey, Black

### Dimensions:

BS1875	180	x 75 cm	Single
BS1890	180	x 90 cm	Single
BS1810	180	x 100 cm	Single
BS1812	180	x 120 cm	Single
TFS1812	180	x 360 cm	Triple

Standard Depth: 32mm



Triple Room Dividing Screen  
- Dark Blue



Triple Room Dividing Screen  
- Rust Red



Triple Room Dividing Screen  
- Light Blue



Triple Room Dividing Screen  
- Teal Blue



## PORTABLE STAGE

Strong, flexible and robust stage units that can be moved and set up in any number of combinations.

Left: Stage with optional carpet, stairs, handrails and stage skirting

### Finishes:



Black (with/  
without Clear  
Lacquer)



Brown (with/  
without Clear  
Lacquer)



Waterproof  
Anti-Slip



Carpet

### Key features:

- Standard Base Units can be combined to requirements
- Square Aluminium Legs (20cm, 40cm, 60cm, 80cm or 1m)

### Optional extras:

- Telescopic Legs (40/60cm or 50/80cm)
- Handrails / Infilled Handrails
- Steps
- Chair Holding Border
- Transport Trolley
- Connector & Connector Tool
- Clear Lacquer, Laminate, Carpet or Waterproof Anti-Slip Finishes
- Stage Skirting

### Standard Sizes:

200 cm x 100 cm  
100 cm x 100 cm

Special sizes available on request.



Standard Base Unit



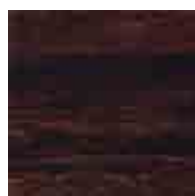
## PORTABLE DANCE FLOOR

Portable dance floors suitable for indoor and outdoor use. Standard size dance floor sets include the required edging and the correct number of transport trolleys.

### Finishes:



Parquet - Cherry



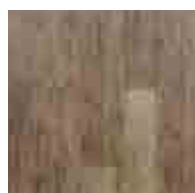
Parquet - Smoked Oak



Parquet - Light Oak



Laminate - Auckland Oak



Laminate - Bracken



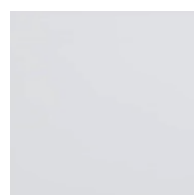
Laminate - Ebony



Laminate - White Washed Oak



Acrylic - Black



Acrylic - White

Edging available in aluminium, gold or custom colours.

### Key features:

- No tools required for assembly
- Edging included as standard
- Transport Trolley included as standard

Parquet - Indoor Use

Laminate - Indoor or Outdoor Use

Acrylic - Indoor or Outdoor Use

### Standard Sizes:

372 cm x 372 cm	12 ft sq	1
458 cm x 372 cm	15 ft x 12 ft	1
458 cm x 458 cm	15 ft sq	1
545 cm x 458 cm	18 ft x 15 ft	2
545 cm x 545 cm	18 ft sq	2
632 cm x 545 cm	21 ft x 18 ft	2
632 cm x 632 cm	21 ft sq	2
718 cm x 632 cm	24 ft x 21 ft	3

### Trolleys:

Special sizes available on request.

# FABRIC COLLECTION





## PRE-BOXED CONFERENCE CLOTHS (FITTED DROP COVERS)

Drop covers are pre-boxed and are made to measure your table so they can be simply dropped into place.



Pre-Boxed Table Cover on reception desk



Fitted Drop Cover on round table

### Key Features

- Pre-Boxed - no need for boxing
- Standard (3 sided cloth with short edged back)
- Durable polyester fabric
- Machine washable and easy care
- Wide range of fabrics or customer's own fabric

### Optional extras:

- 3-sided with European corners (sewn over back)
- 4-sided (full way around the table)
- Range of heights (full height and half height)
- Banner cloth
- Embroidered or printed logo
- Laser engraved logo (double sided fabric only)



Conference Table Cover with standard short back edge



Conference Table Cover with European corners



Half Round Tables with half height Conference Covers



Round Table with full height Conference Drop Cover



Oval Boardroom Table with half height Conference Cover



## CONFERENCE CLOTHS (THROW CLOTHS OR BAIZES)

Conference cloths smarten up the entire room in seconds as they are made from quality plush fabric and can be thrown over tables. Cloth is also available for boxing and larger cloths can be joined with seams to cover oversized tables.



Rectangular Throw Cloth



Round Throw Cloth

### Key Features

- Also known as a throw cloth or baize
- Durable quality fabric
- Machine washable and easy care polyester
- Huge range of fabrics or customer's own fabric

### Optional extras:

- Choice of double or single sided fabric
- Larger (rectangular) cloths have radius corners
- Embroidered or printed logo
- Laser engraved logo (double sided fabrics only)
- Banner cloth
- Blotters



Banner Cloth with embro-  
idered logo



Logo embroidered directly  
onto Conference Drop Cover



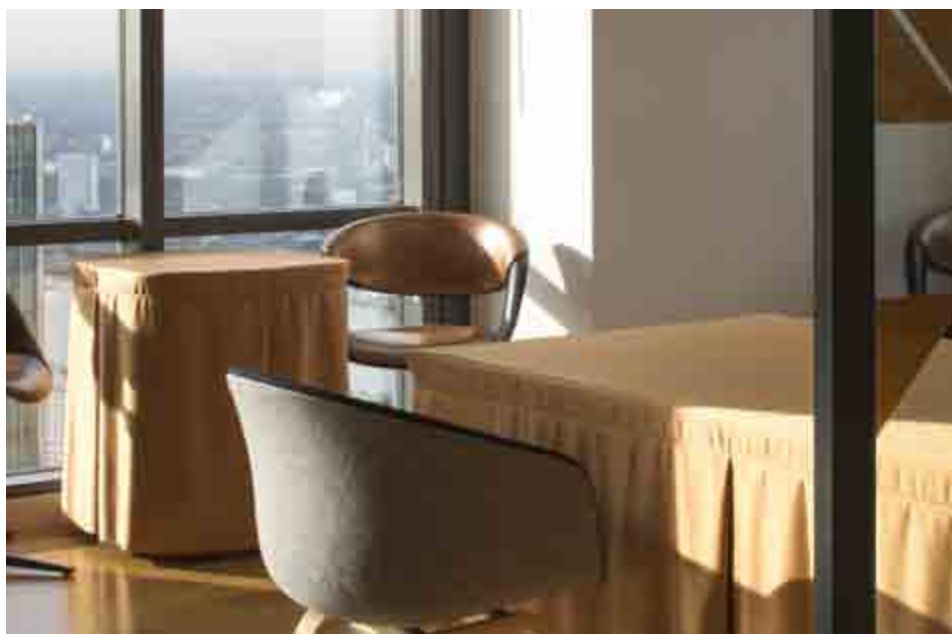
Mode Covers combine conference cloth tops with  
stretch table covers



Flip Chart Covers



Leather Blotters



## CONTEMPORARY TABLE COVERS

Contemporary table covers have clean clear aesthetics and the added advantage of easy fitting, while still providing diners with the feel of quality table linen.

### Key Features (Contemporary Table Covers):

- Panelled skirt allows diners to sit with ease
- No requirement for boxing
- No clips or hook & loop fastening
- Machine washable and easy care
- Huge range of fabrics or customer's own fabric

### Optional:

- Gusset
- Hem (edges are overlocked as standard)
- Table runners and matching napkins

### Key Features (Cocktail Table Covers):

- Rapid set up
- No clips or fastenings
- Pleated or flat panels
- Machine washable and easy care
- Huge range of fabrics or customer's own fabric

### Optional:

- Acrylic plate / top protector



Rectangular Table Cover



Square Table Cover



Round Table Cover with gusset



Round Table Cover with gusset

## CONTEMPORARY POSEUR TABLE COVERS

Contemporary cocktail table covers can be made in almost any fabric with a choice of pleated or flat panels. They are perfect for rapid room set-up.





## STRETCH FABRIC TABLE COVERS

Silcra stretch table covers have a number of advantages including quick fitting, clean lines and easy storage as the covers don't crease. The quality polyester/nylon mix fabric and the sewn in reinforcing ensure longevity.



Printed Stretch Trestle Table Cover



Table Cover with contrast colour top or fabric lid

### Key Features

- Quick fitting Silcra stretch material
- Doesn't crease in storage
- Quality fabric, doesn't bag
- Fabric composition: 80% Nylon / 20% Lycra
- Double seams and reinforced foot pockets
- Made to measure, wide range of colours
- Machine washable and easy care

### Optional extras:

- Printed logos or photographs
- Contrasting colours
- Cut-out back to allow seating
- Fabric lid (reduces laundry)
- Acrylic table top protector (shown above)



Plain Stretch Table Cover



Photo Printed Stretch Cover for Exhibitions & Trade Shows



Stretch Table Cover with cut-out back to allow seating



Mode Cover - conference cloth and stretchy fabric



Stretch Table Cover with Buffet-Rite table top



Buffet Cube with Stretch Cover



Stretch Covers also available for Round and Half Round Tables



## STRETCH FABRIC POSEUR TABLE OR COCKTAIL TABLE COVERS

Transform your cocktail tables in seconds with Silcra stretch covers. Covers can be pulled straight over the table or twisted around the base.



Stretch Cover for Poseur  
Table - twisted around base



Cocktail Table Cover with  
contrast colour top

### Key Features

- Quick fitting
- Doesn't crease in storage
- Quality Silcra stretch fabric, doesn't bag
- Fabric composition: 80% Nylon / 20% Lycra
- Double seams and reinforced foot pockets
- Made to measure, wide range of colours
- Machine washable and easy care

### Optional extras:

- Printed logos or photographs
- Contrasting colours
- Fabric lid (reduces laundry)
- Acrylic top protector (shown below)



Stretch Velvet Table Cover



Stretch Cover with separate  
lid in pearlescent sheen fabric





## SIMPLE FIT TABLE SKIRTING

Fit neat tableskirting in seconds  
 - Simple-Fit has a stretch Silcra top that can be pulled over the table edge quickly, keeping skirting hems even. There is no need for clips or hook & loop fastening, making a full room set up more efficient.



Trestle Table - Shirred



Round Table - Shirred

### Key Features - Simple Fit Skirting

- Quick fitting to tables, just pull over table
- Instantly level, hems hang evenly
- Shirred pleating only
- No clips or hook & loop fastening
- Panels for diner comfort while seated
- Machine washable and easy care
- Huge range of fabrics or customer's own fabric

### Optional extras (both types of skirting):

- Hem (edges are overlocked as standard)
- Matching tablecloth
- Table runners
- Matching napkins
- Table skirting caddy
- Skirtmate hangers
- Libra Table Protector (less laundry cost)

### Key Features - Restaurant Skirting

- Attaches with Velcro tape, so quick to fit
- Can attach to table edge or table protector
- Accordion pleating only
- Machine washable and easy care
- Huge range of fabrics or customer's own fabric
- Flexible, could be joined together
- Panels for diner comfort while seated



## RESTAURANT TABLE SKIRTING

Traditional table skirting attached with hook & loop tape to the table protector or table top, making it fast to fit. Particularly useful in a restaurant setting, the skirting is designed with panels for the comfort of diners.



Hook & Loop Fastening



## TABLE SKIRTING WITH CLIPS

Table skirting is ideal for use where a venue needs flexible banqueting arrangements, whether small like wedding cake tables or large like mass catering for a buffet breakfast. Skirting is also suitable for business break-out areas or conference registration tables.



Trestle Table - Box Pleat



Square Table - Flat Panel



Round Table - Double Box Pleat



Banqueting - Shirred

### Key Features

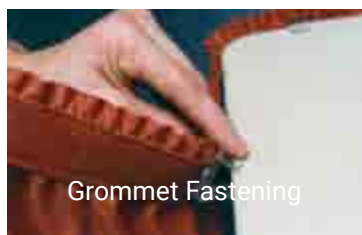
- Flexible, panels can be joined together
- Can attach to table or protector cover
- Made to measure
- Six pleat styles
- Machine washable and easy care
- Huge range of fabrics or customer's own fabric
- Berkley fabric is liquid resistant
- Saves time spent on boxing cloths

### Optional extras:

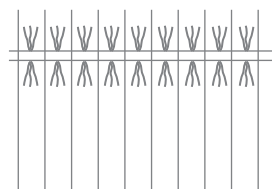
- Clips
- Tab ends for joining skirting
- Hem (edges are overlocked as standard)
- Top cloth
- Table runners
- Matching napkins
- Storage caddy & Skirtmate hangers
- Valances



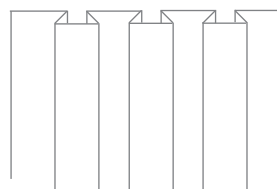
Hook & Loop Fastening



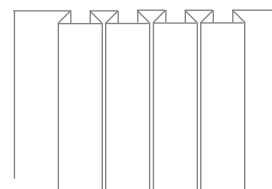
Grommet Fastening



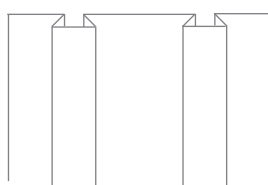
Shirred



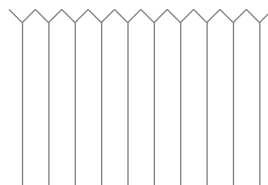
Box Pleat



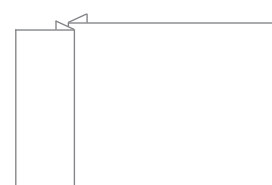
Double Box Pleat



Regency Pleat



Accordion Pleat



Flat Panels



## LUXURY WEAVE TABLECLOTHS & NAPKINS

Luxury range of patterned fabrics that can be made to measure for your tables with matching napkins and table runners (shown left).



Serenity Plain White Napkin  
(other colours available)

### Key Features (Luxury Weave):

- Variety of woven fabric patterns
- Quality heavyweight fabric - snag resistant
- Machine washable and easy care
- Huge range of fabrics or customer's own fabric
- Made to measure

### Optional:

- Table runners
- Matching napkins
- Place mats



### Key Features (Serenity):

- Soft feel quality durable fabric
- Recycled fibres - water, stain & snag resistant
- Machine washable and easy care
- Excellent colour retention
- Over 20 colours available

### Optional:

- Table runners
- Matching napkins
- Place mats

## SERENITY TABLECLOTHS & NAPKINS

Soft feel tablecloths and napkins in recycled fibres that are water, stain and snag resistant and machine washable.



## TABLE PROTECTORS



Round Table Protector - Lip  
Edge with Hook & Loop Tape



Trestle Table Protector - Lip  
Edge with Hook & Loop Tape

### Key Features

- Protects table
- Reduces noise during service
- Cushions table, providing a quality feel

### Shower Cap only:

- White only

### Lip Edge only:

- Ideal for use with restaurant skirting or contemporary covers
- With or without hook & loop tape fastening
- White or cream
- Plain finish



Round Table Protector -  
Shower Cap (also available  
for Trestle Tables)

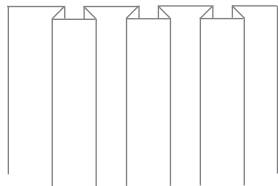


Round Table Protector -  
Shower Cap on Room Service  
Table

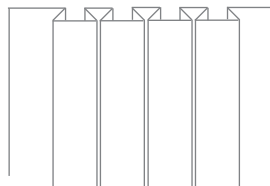


## STAGE SKIRTING

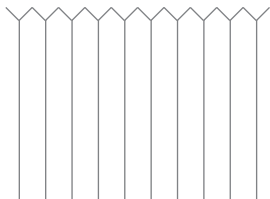
Self adhesive with hook & loop tape, stage skirting can be installed on the edge of a portable stage in minutes. Stage skirting is also available as height adjustable.



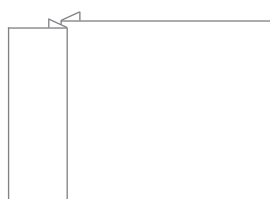
Box Pleat



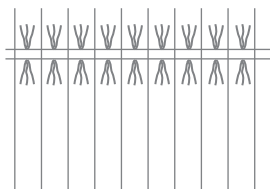
Double Box Pleat



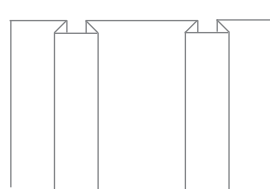
Accordion Pleat



Flat Panels



Shirred



Regency Pleat

### Key Features

- Self-adhesive with hook & loop (Velcro) tape
- Sections can be attached to adjust length
- Six pleat styles
- Made to measure
- Machine washable and easy care
- Huge range of fabrics or customer's own fabric

### Optional extras:

- Height adjustable
- Hem (edges are overlocked as standard)



## CUSTOM FABRIC CHAIR COVERS

Forbes Group have produced a huge range of chair cover designs for individual customers over the years. We will make virtually anything to order, so ask us about your idea.



Custom Chair Cover  
with square back



Custom Chair Cover  
with panel inset

### Key Features:

- Made to measure to requirements
- Huge range of fabrics or customer's own fabric
- Machine washable and easy care

### Optional:

- Buttons, Bows, Bands, Ties and Sashes
- Chair ties to hang chair covers in storage
- Hangars for storage



Custom Chair Cover  
with sewn in bow



Horizon Chair Cover with  
stretch cover base



Custom Chair Covers  
with round backs and ruching



Custom Chair Covers  
with organza sashes



## STANDARD CHAIR COVERS

Chair covers are made to order for the customer in a wide range of fabrics or the customer's own fabric to match the interior decor of the venue.



Economy Chair Cover



Elegance Chair Cover



Deluxe Chair Cover



Elegance  
Gold Chair Cover



Deluxe  
Black Chair Cover



Economy  
Red Chair Cover

Standard chair covers come in Economy, Elegance and Deluxe patterns, in any fabric you choose.

### Key Features:

- Made to measure
- Machine washable and easy care
- Huge range of fabrics or customer's own fabric

### Optional:

- Buttons, Bows, Bands, Ties and Sashes
- Chair ties to hang chair covers in storage
- Hangars for storage



Standard Chair Covers



## STRETCH CHAIR COVERS

Stretch chair covers can dress a roomful of chairs in minutes, as they can be stretched over a chair in seconds, resulting in a neat clean finish.

Photo: Oliva Nova Beach & Golf Resort



White Stretch Chair Cover



Black Stretch Chair Cover



Black Stretch Chair Cover with arches



White Stretch Chair Cover with gold stretch bow

Suitable for banqueting chairs, wedding chairs or meeting room and conference hall chairs.

### Key Features:

- Stretches over a chair in seconds
- Neat clean lines, no need for ironing
- Foot pockets hold the fabric taut
- Double seams ensure longevity
- Can be stored without creasing
- Made to measure to any chair specification
- Quality Silcra stretch fabric, doesn't bag
- Fabric composition: 80% Nylon / 20% Lycra
- Machine washable and easy care
- Wide range of colours

### Optional:

- Arch
- Bows, Bands, Ties and Sashes



Stretch Wedding Chair Covers



## CONFERENCE BLOTTERS

Luxurious leather blotters for business meetings or conferences with optional personalisation.



Bordeaux Conference Blotter



Coburg Conference Blotter

### Key Features:

- Simulated leather or bonded leather
- Wipe clean finish
- Various design styles

### Optional:

- Gold or coloured personalisation
- Embossed
- Moiré silk lined
- Silver, Gold or Brass metal corners
- Writing pads (not sold with blotters)

### Dimensions:

Bordeaux (sm)	40	x 33 cm
Bordeaux (md)	45	x 32 cm
Bordeaux (lg)	50	x 35 cm
Coburg	25.5	x 38 cm
Florence	45	x 29.5 cm
Monaco	36	x 30.5 cm
Vienna	24	x 40 cm



Florence Conference Blotter



Monaco Conference Blotter

Coasters

10 cm ø



Vienna Conference Blotter



Coasters & Placemats



## FLIP CHART COVERS

Smarten up your boardroom or conference room for business meetings with a branded flip chart cover.



Flip Chart Cover  
with Embroidered Logo



Close-up photo of a printed  
logo

### Key Features:

- Adds to professionalism in meeting rooms
- Branded to match your corporate identity
- Made to measure
- Machine washable and easy care
- Huge range of fabrics or customer's own fabric

### Optional:

- Embroidered or printed logo
- Laser engraved logo (double sided fabrics only)



Close-up photo of a  
laser etched logo



Close-up photo of an  
embroidered logo

# EQUIPMENT COLLECTION





## BIRDCAGE® HOTEL LUGGAGE CARTS

The signature Birdcage® trolley design is recognised as a symbol of excellence at the finest hotels worldwide. With many styles to choose from, these trolleys set the standard for aesthetics and functionality when it comes to high end luggage carts.

### Key Features

- Solid brass or stainless steel (brushed or polished) frames
- Full wrap-around bumper
- Castors mounted under a reinforced carpeted deck
- Non-marking wheels

### Optional extras:

- Bespoke finials
- Personalised carpet
- Removable shelf
- Hand grips
- Fabric cover or panel (waterproof optional)



2421 Luggage Cart with solid brass frame



2428 Luggage Cart with solid brass frame



2437 Luggage Cart with solid brass frame



2521-SS Luggage Trolley with stainless steel frame



Fabric Trolley Cover personalised with the hotel logo



## BIRDCAGE® HOTEL LUGGAGE TROLLEYS



2523-SS-EMEA Luggage Trolley with stainless steel frame



2525-SS Luggage Trolley with stainless steel frame

### Finishes:

Bumper Colour - Beige, Black, Brown, Gray  
Carpet Colour - Beige, Black, Brown, Gray, Blue, Green, Red, Burgundy

### Dimensions:

2421*	110	x 61	x 199 cm	68kg
2437	122	x 61	x 183 cm	68kg
2521-SS	110	x 61	x 199 cm	63kg
2523-SS-EMEA	122	x 61	x 199 cm	
2525*	110	x 61	x 199 cm	69kg
2526-SS	110	x 61	x 199 cm	71kg
2528*	122	x 61	x 183 cm	70kg

\* Quick ship



2526-SS Luggage Cart with stainless steel frame



2528-SS Luggage Cart with stainless steel frame



Handle Grips



## DELUXE HOTEL LUGGAGE TROLLEYS

Built to the same high specification as the Birdcage, the Deluxe Luggage Carts offer a contemporary style. A selection of styles and finishes offer the quality hotel fine appearance and longevity, even when used for high volumes.

### Key Features

- Solid brass or stainless steel (brushed or polished) frames
- Full wrap-around bumper
- Castors mounted under a reinforced carpeted deck
- Pneumatic wheels for easy manoeuvrability

### Optional extras:

- Bespoke finials
- Personalised carpet
- Removable shelf
- Hand grips
- Fabric cover or panel

### Finishes:

Bumper Colour - Beige, Black, Brown, Gray  
Carpet Colour - Beige, Black, Brown, Gray, Blue, Green, Red, Burgundy

### Dimensions:

2410	110	x 61	x 199 cm	78kg
2505	112	x 65	x 183 cm	100kg
2512-SS	108	x 61	x 173 cm	74kg
2581-SS	122	x 59	x 183 cm	68kg



2410 Luggage Cart with solid brass frame



2505DB-SS Luggage Cart with stainless steel frame



2512-SS Luggage Trolley with stainless steel frame



2581-SS Luggage Trolley with stainless steel frame



## ECONOMY HOTEL LUGGAGE TROLLEYS

These affordable yet durable luggage trolleys were designed with both aesthetics and practicality in mind. The Economy series of luggage trolleys are models of good sense and reliability.



H1210-5C Luggage Cart with carpet



H1211-5 Luggage Cart with epoxy coating

### Key Features

- Stainless steel frames
- Full wrap-around bumper
- Castors mounted under a reinforced carpeted deck
- Non-marking wheels

### Optional extras:

- Personalised carpet
- Hand grips
- Fabric cover or panel

### Finishes:

Powder epoxy coating finish (structure and deck)  
 Bumper Colour - Beige, Black, Brown, Gray  
 Carpet Colour - Beige, Black, Brown, Gray, Blue, Green, Red, Burgundy

### Dimensions:

H1210-5C	94	x 47	x 167 cm	30kg
H1211-5	91	x 44	x 167 cm	27kg



## BELLMAN'S EQUIPMENT, HANDTRUCKS AND SELF SERVICE LUGGAGE CARTS

A wide range of Bellman's Equipment including Handtrucks and Self Service Luggage Carts.



1550-CK Bellman's Handtruck



1566-CK-PS Handtruck  
(1566-X2 shown above)

### Key Features

- Handtrucks in stainless steel or brass
- 10" black wheels
- Self serve luggage carts in stainless steel
- 8" wheels in back, 5" swivel wheel in front
- Platform truck has a reinforced steel deck
- 8" wheels

### Optional extras:

- Wraparound carpet kits in a variety of colours
- Wire baskets
- Logo panels

### Finishes:

Handtruck Carpet Colour - Beige, Black, Brown, Gray, Blue, Green, Red, Burgundy  
Self Serve Carpet Colour - Devil Blue, Jet Black, Whirlwind White

### Dimensions:

1550-CK	61	x 49	x 116 cm	16kg
1566	74	x 56	x 126 cm	26kg
1570-CK	60	x 56	x 120 cm	24kg
1575-SS	94	x 72	x 94 cm	20kg
1576	127	x 66	x 97 cm	48kg



1570-CK Luggage Handtruck



1575-SS Self Service Luggage  
Cart



1576 Platform Luggage Truck



## ROOM SERVICE TABLES & TRAYS



4402 Beverage Restocking  
Cart



4832 Beverage Cart

### Features & Finishes:

4402

Powder Epoxy Finish in Beige, Grey or Sierra Brown  
Side cabinets, adjustable drawers, stainless steel top tray,  
dividers and mesh mats  
Wraparound bumpers  
8 inch grey wheels, one with brake

4832

Laminate Cabinet with Avonite top and two glass racks,  
brass rails and handles, two removable stainless steel  
bain-mairies  
Avonite: 9 colours  
Laminate: 32 colours



4960 Round Room Service  
Table (drop leaf turned up)



4970 Round Room Service  
Table (drop leaf turned down)

4960\* / 4970

Oval tabletop with tri-fold drop leaves  
Hotbox rails  
\* Quick Ship

4971

Rectangular tabletop with bi-fold drop leaves  
Hotbox rails



4971 Square Room Service  
Table



6850 Tray Stand

4970-WDS/4971-WDS

As above with optional drop down shelves for hotboxes

6850

Painted (Powder Coated) steel tube with black poly straps

### Dimensions:

4402	121	x 54	x 119 cm	106kg
4832	92	x 49	x 102 cm	78kg
4960	92	x 111	x 75 cm	35kg
4970	92	x 111	x 75 cm	35kg
4971	91	x 99	x 75 cm	35kg
6850	50	x 91 cm		26kg



# ROOM SERVICE HOT BOXES



6262 Electric Hot Box



6268 Electric Hot Box with  
Extending Handle



6271 Solid Fuel Hot Box



6272 Electric Hot Box

## Features & Finishes:

6262  
Painted Stainless Steel Electric Hot Box  
Three shelves

6268  
Stainless Steel Electric Hot Box with Extending Handle  
(Aluminium Interior)

6271  
Stainless Steel Solid Fuel Hot Box (Aluminium Interior)

6272\*  
Stainless Steel Electric Hot Box (optional 110 or 220 volts -  
specify on order)  
\* Quick Ship

## Dimensions:

6262	38	x 51 cm	14kg
6268	38 x 37	x 51 cm	16kg
6271	38	x 51 cm	12kg
6272	38	x 51 cm	14kg



## LUGGAGE RACKS

We offer a range of luggage racks made in hardwood, oak or steel in a variety of designs and finishes to suit any hotel room interior. Folding luggage racks come in several sizes, with or without a bumpered back bar.



800-CH Steel Luggage Rack  
with bumper bar - Chrome



801-SB Steel Luggage Rack -  
Sierra Brown



902 Hardwood Luggage Rack  
with bumper bar - Dark Oak



934 Hardwood Luggage Rack  
- Walnut

### Key Features:

#### Steel Luggage Racks

- Round steel tube with bumpered back bar
- Crimped and formed ends (no rough edges)
- High quality poly straps

#### Hardwood Luggage Racks

- Compression resistant hardwood
- Steel rivets & cross braces strengthen
- High quality poly straps
- Bumper back bar (optional)

### Finishes:

#### Steel Luggage Racks:

Frame: Bronze, Chrome, Sierra Brown, Silver, Beige, Textured Black, Brushed Stainless Steel

#### Hardwood Luggage Racks:

Frame: Black, Cherry, Dark Oak, Light Oak, Mahogany, Medium Oak, Pecan, Walnut

Straps: Black or Brown (as standard), Black Leather, Black Vinyl, Brown Leather, Brown Vinyl, Burgundy, Paris Beige, Spanish Silver (upgrades)

### Dimensions:

800-CH	54	x 61	x 63 cm	23kg
801	46	x 61	x 52 cm	19kg
902	51	x 61	x 68 cm	16kg
934	40	x 61	x 52 cm	15kg



## HOUSEKEEPING CARTS

Wide range of housekeeping carts (this is just a small selection) for larger premises and small boutique hotels.



2010 Aluminium Housekeeping Cart



H1040 Steel Housekeeping Cart



2044 InRoom Housekeeping Cart



2087 Compact Mini Roller Housekeeping Cart

### Features & Finishes:

2010 \*  
Aluminium frame  
Top tray, shelves, handles, end platforms  
Wraparound bumper, 8 inch black wheels

H1040 \*  
Steel frame  
Shelves, rear platform, wraparound bumper  
2 8 inch and 2 4 inch grey wheels

2044  
Steel tube frame, Aluminium cabinet  
Hinged top, 2 shelves, caddies on back, snap on front  
4 swivel wheels

2087 \*, \*\*  
Heavy duty nylon  
Stackable amenity caddies, side pockets, retractable handle, literature storage, one laundry bag, 4 swivel castors

2088 \*, \*\*  
Heavy duty nylon  
Stackable amenity caddies, side pockets, literature storage, retractable handle, 4 swivel castors

**\* Housekeeping Bags are sold separately**  
**\*\* Maximum weight limit: 25kg**

### Dimensions:

2010	158	x 55	x 140 cm	69kg
H1040	83	x 50	x 106 cm	34kg
2044	53	x 56	x 94 cm	19kg
2087	50	x 40	x 74 cm	14kg
2088	50	x 40	x 66 cm	13kg



2088 Large Mini Roller Housekeeping Cart



2088 Laundry Bag (sold separately)



## LAUNDRY CARTS

Strong steel framed laundry carts with cloth bags and easily manoeuvrable wheels.



1106-B Laundry Cart



1120-B Laundry Cart



1128-EN Laundry Cart



1179-B Laundry Cart

### Features & Finishes:

1106-B  
Steel tubular frame  
Silver Powder Epoxy Finish  
6 bushel black cloth bag  
Swivel castors  
Wraparound bumper

1120-B  
Steel tubular frame  
Silver Powder Epoxy Finish  
15 bushel black cloth bag  
2 swivel & 2 rigid castors  
Wraparound bumper

1128-EN  
Folding frame  
Textured black paint  
4 bushel black cloth bag  
Swivel castors with bumpers

1179-B  
Steel frame  
Silver Powder Epoxy Finish  
12 bushel tub  
2 swivel & 2 rigid castors  
Wraparound bumper

### Dimensions:

1106-B	56	x 56	x 83 cm	14kg
1120-B	124	x 60	x 99 cm	23kg
1128-EN	68	x 66	x 103 cm	14kg
1179-B	102	x 77	x 89 cm	38kg



## LINEN CARTS & GARMENT RACKS

Strong steel framed linen carts and garment racks



1228-MEB Steel Linen Cart



1228-MEBD Steel Linen Cart  
with doors



2409 Steel Garment Rack

### Features & Finishes:

1228-MEB  
Steel frame  
Silver Powder Epoxy Finish  
6" grey wheels (optional 8")  
Mesh at ends and back, handles  
Wraparound bumper

1228-MEBD  
Steel frame  
Silver Powder Epoxy Finish  
6" grey wheels (optional 8")  
Mesh at ends and back, Mesh lockable doors  
Wraparound bumper

2409  
Brushed Stainless Steel Frame  
Frame: Bronze, Sierra Brown, Silver, Textured Black  
Painted cabinet with adjustable shelves  
Carpeted deck  
Carpet: Beige, Black, Blue, Brown, Burgundy, Gray, Green, Red  
Wraparound bumper  
8" grey wheels

### Dimensions:

1228-MEB	132	x 73	x 174 cm	97kg
1228-MEBD	132	x 73	x 174 cm	118kg
2409	120	x 56	x 180 cm	50kg



## MOBILE BARS & BACK BARS

Wide range of models, sizes and finishes available.



4966-6 6 foot Mobile Bar



4966-6 6 foot Mobile Bar - Rear

### Features & Finishes:

4859  
5, 6, and 8 foot mobile bar (6ft shown)  
Laminated cabinet, Avonite top, Stainless Steel work counter, ice pan and speed rail  
Avonite: 24 colours  
Laminate: 34 colours

4873  
5, 6, and 8 foot mobile bar (6ft shown)  
Curved laminate front with stainless steel accent strips, Avonite countertop  
Open back with shelves, ice pan  
Avonite: 9 colours  
Laminate: 32 colours

5771  
Hardwood mobile bar with wood veneer cabinet and brushed stainless steel accent strips, Avonite worktop, laminate interior to cabinet  
Stainless steel work counter, speed rails, sink with drain, cabinet with glass racks, enclosed centre cabinet  
5 inch grey wheels  
Avonite: 24 colours  
Wood Veneer: 14 colours

### Dimensions:

4859-6	247	x 79	x 126 cm	179kg
4873-6	190	x 73	x 122 cm	
5771	183	x 77	x 120 cm	



4873-6 6 foot Mobile Bar



4873-6 6 foot Mobile Bar - Rear



5771-6 6 foot Mobile Bar



5771-6 6 foot Mobile Bar - Rear



## MOBILE BARS & BACK BARS

Wide range of models, sizes and finishes available.



5773-6 6 foot Mobile Bar  
(shown with 5873 Back Bar)



5773-6 6 foot Mobile Bar -  
Rear



5806 Slimfold Mobile Bar



5806 Slimfold Mobile Bar



6570-SS Étagère in Polished  
Stainless Steel

### Features & Finishes:

#### 5773

Hardwood mobile bar with wood veneer cabinet and glass tile front panel (red, green or blue), Trend Glass countertop, remote controlled LED lighting  
Stainless steel work counter, sink and drain, enclosed centre cabinet

Avonite: 24 colours

Wood Veneer: 14 colours

#### 5873

Hardwood mobile back bar with Trend Glass countertop and top hutch with glass tiles (red, green or blue), remote controlled LED lighting

Six glass shelves, down lights, large storage area, locking doors

Avonite: 24 colours

Wood Veneer: 14 colours

#### 5806 Slimfold

Folding mobile bar with wood veneer and Avonite countertop (shown with Trend countertop)

Stainless steel working countertop and removable plastic ice bin and speed rails

Avonite: 24 colours

Wood veneer: 14 colours

#### 6570-PS

Étagère in Polished Stainless Steel

Rectangular frame with 8 safety-glass shelves

Also available in solid brass or powder epoxy coating

### Dimensions:

5773	178	x 85	x 120 cm	240kg
5873	178	x 70	x 199 cm	327kg
5806 Slimfold	183	x 79	x 119 cm	
6570-PS	122	x 36	x 174cm	98kg



## PODIUMS AND HOST STATIONS

Wide range of models, sizes and finishes available.



4898 Two Piece Podium in Laminate



5005 Acrylic Podium



5890 Podium in Wood Veneer



5890 Podium rear showing Dual Work Surface and Shelf

### Key Features:

4898

- Two piece podium with brass accents in Laminate
- Top can be removed to use as floor style or tabletop podium

5005

- Podium in Clear Acrylic, 1/2" thick, square sided

5890

- Wood Veneer with brushed Stainless Steel base

### Optional Extras:

- Engraved Logo Plate, Lights, Microphones, Power outlets, Sound System, Digital Clock

### Dimensions:

4898	65	x 65	x 120 cm	65kg
5005	61	x 61	x 119 cm	
5890	52	x 74	x 120cm	68 kg

### Laminate Colours:

Ice Fishin, Cavalcade South, Crisscross, Wedding Cake, Looks Likatre, Negotiating in Geneva, Cookies & Cream, Macadamia Nut, Chocolate Malt, Maple, Light Oak, Medium Oak, Cherry, Smoky Walnut, Seems Likatre, Royal Burgundy, Walnut, Mahogany, Thunderstorm, Greige, Ingot Gray, Slate, Lunar Legno, First N Main, Suede, Textured Black, Slate, Upgrade colours also available

### Wood Veneer Colours:

Satin Champagne, Satin Stormy Birch, Black, Satin Brown Cherry, Satin Brown Mahogany, Satin Dark Oak, Satin Golden Mahogany, Satin Light Oak, Satin Maple, Satin Medium Oak, Satin Natural Cherry, Satin Pecan, Satin Red Cherry, Satin Red Mahogany

