



FURNITURE COLLECTION

LIGHTWEIGHT FOLDING TABLES - ALU-LITE®



LIGHTWEIGHT FOLDING TABLES ALU-LITE

Lightweight folding tables that are ideal for buffet or banquets, reception or meetings in classroom, cabaret or U-shape set ups.

Left: Rectangular Folding Table with Standard Legs



Round Folding Table



Half Round Folding Table

Key features:

- Waterproof and durable laminate surface
- Aluminium frame is lightweight and recyclable
- Resistant to corrosion, ideal for outdoor use
- Self locking folding mechanism
- Alu-Lite tables conform to the EU guidelines for lifting weights
- Nylon flush fit corners are fitted as standard on rectangular tables

Optional extras:

- Flock coating to reduce noise in busy venues
- Storage trolley

Quality:

The Alu-Lite range, with its patented engineering, is produced to a high-end specification, including 100% aluminium frames and 2.5mm solid laminate tops, which are heat resistant and waterproof, for strength and durability.

Flush fit corners:

Flush fit corners are standard on all rectangular Alu-Lite tables. The new nylon corners adds strength and improves corner impact resistance. It also incorporates a stacking buffer that allows tables to be stacked and stored with ease.



Oval Folding Table



Rectangular Folding Table with T-Bar Legs





LIGHTWEIGHT FOLDING TABLES ALU-LITE

Lightweight folding tables that are ideal for buffet or banquets, reception or meetings in classroom, cabaret or U-shape set ups.

Left: Round Folding Table Storage Trolley

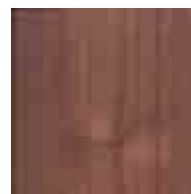


Storage Trolley



Storage Trolley

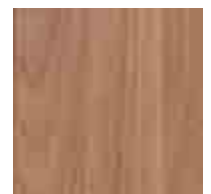
Table Top Finishes:



Walnut



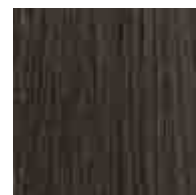
Beech



Oak



Ash



Wenge



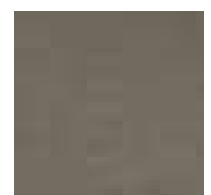
Cherry



Sheffield



Anthracite



Flocked

Frame Powder Coating:



Silver Sparkle



Black



Anthracite



Matte Brown



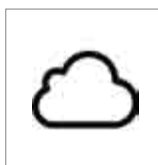
Fast set-up/breakdown:

Both set-up and breakdown of rooms is quicker than with conventional banquet tables, with attendant implications for efficiency and cost- savings.



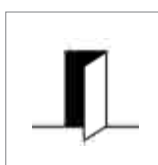
97% recyclable:

Alu-Lite tables are manufactured from aluminium (97%) and laminate resin (3%). All of the aluminium can be recovered and recycled.



Great for outdoor use:

Alu-Lite tables can be used and stored outside. Aluminium is inherently highly resistant to corrosion, making it particularly advantageous for use near coastal resorts.



Less Damage to Property:

The lower weight of these tables means that they cannot be used by staff to bang open doors, and they are less likely to cause damage to walls and doorframes.

Rectangular Table - Standard Leg



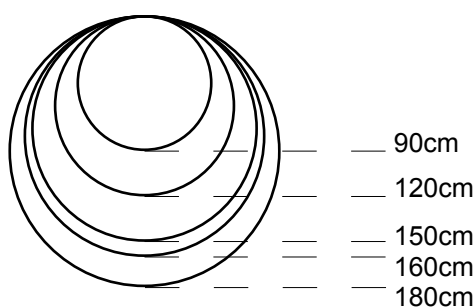
AFT8075	80 cm	75 cm	7.8 kg
AFT1245	120 cm	45 cm	7.2 kg
AFT1260	120 cm	60 cm	8 kg
AFT1275	120 cm	75 cm	8.8 kg
AFT1545	150 cm	45 cm	8.5 kg
AFT1560	150 cm	60 cm	9.2 kg
AFT1575	150 cm	75 cm	9.8kg
AFT1845	180 cm	45 cm	9.7kg
AFT1860	180 cm	60 cm	10.2kg
AFT1875	180 cm	75 cm	10.9kg
AFT2045	200 cm	45 cm	10.7kg
AFT2245	220 cm	45 cm	11.5kg
AFT2475	240 cm	75 cm	14.5kg

	45cm	60cm	75cm
80cm			
120cm			
150cm			
180cm			
200cm			
220cm			
240cm			

Round Table - Standard Leg



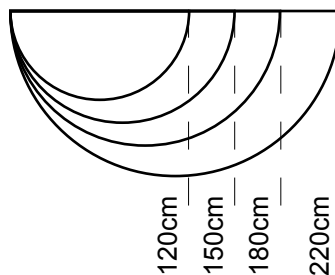
AFT90D	90 cm	3 ft	9.8 kg
AFT12D	120 cm	4 ft	12 kg
AFT15D	150 cm	5 ft	14.5 kg
AFT16D	160 cm	5 ft	16.5 kg
AFT18D	180 cm	6 ft	20 kg



Half Round Table - Standard Leg



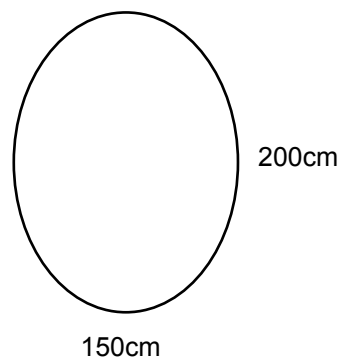
AFT12SC	120 cm	4 ft	9 kg
AFT15SC	150 cm	5 ft	10 kg
AFT18SC	180 cm	6 ft	14 kg
AFT22SC	220 cm	7 ft	16 kg



Standard height (for all Alu-Lite) = 73.5 cm

Special sizes available on request

Oval Table - Standard Leg



AFT2015 200 cm 150 cm 19.6 kg

Rectangular Table - T-Bar T-Leg



AFTT8075	80 cm	75 cm	7.8 kg
AFTT1260	120 cm	60 cm	8 kg
AFTT1275	120 cm	75 cm	8.8 kg
AFTT1545	150 cm	45 cm	8.5 kg
AFTT1560	150 cm	60 cm	9.2 kg
AFTT1575	150 cm	75 cm	9.8kg
AFTT1845	180 cm	45 cm	9.7kg
AFTT1860	180 cm	60 cm	10.2kg
AFTT1875	180 cm	75 cm	10.9kg
AFTT2045	200 cm	45 cm	10.7kg
AFTT2245	220 cm	45 cm	11.5kg
AFTT2475	240 cm	75 cm	14.5kg

	45cm	60cm	75cm
80cm			
120cm			
150cm			
180cm			
200cm			
220cm			
240cm			

**Standard height (for all
Alu-Lite) = 73.5 cm**

**Special sizes available
on request**